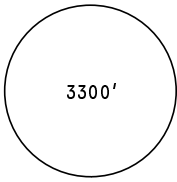
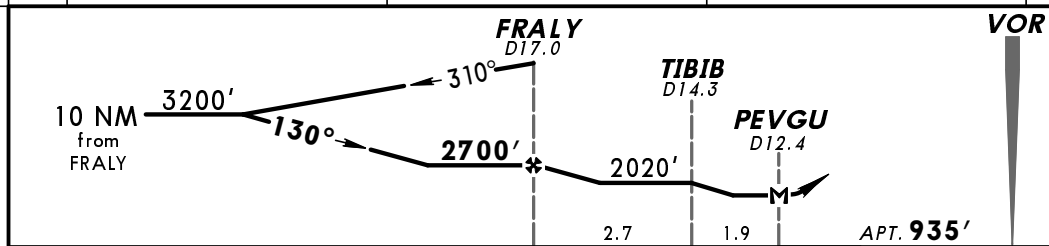
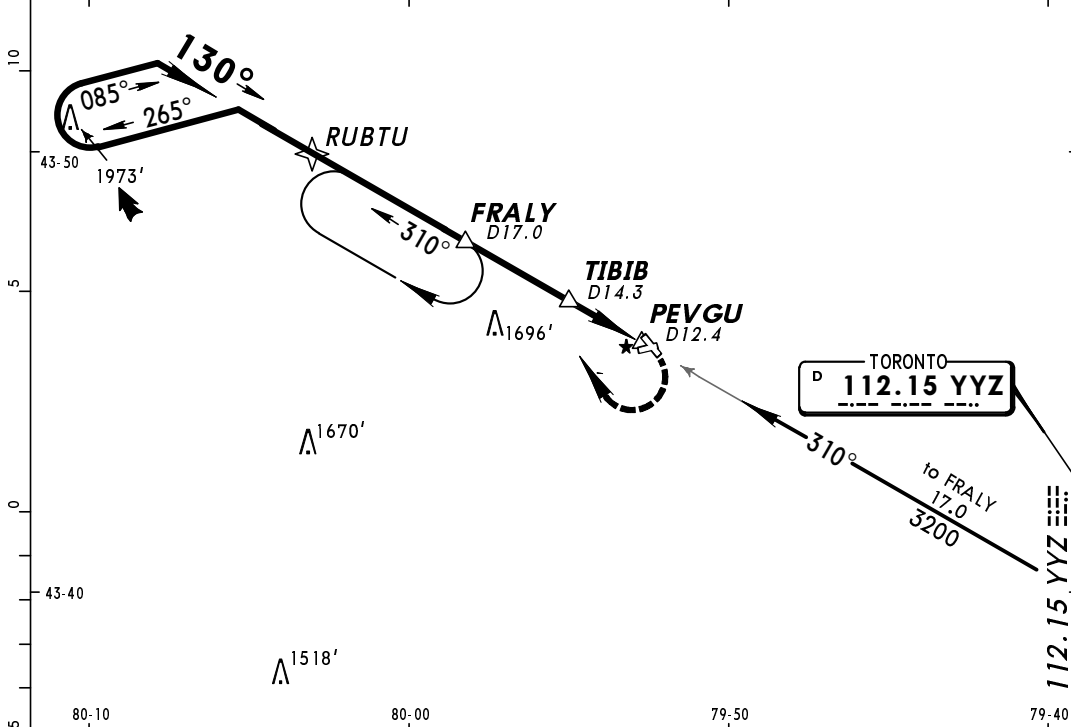



**CNC3**  
**BRAMPTON**

**JEPPESEN**  
 7 SEP 07 **(13-1)**

**BRAMPTON, ONT**  
**(GNSS) VOR DME-A**

TORONTO Terminal Arrival <b>119.3</b>		*BRAMPTON UNICOM ATF <b>123.3</b>		BRAMPTON Traffic ATF <b>123.3</b> when UNICOM inop.	
VOR YYZ <b>112.15</b>	Final Apch Crs <b>130°</b>	Minimum Alt <b>FRALY</b> <b>2700'</b> (1765')	MDA(H) Refer to Minimums	Apt Elev <b>935'</b>	
<b>MISSED APCH: RIGHT</b> climbing turn to intercept YYZ VOR R-310 outbound to FRALY at 3200' and hold.					 3300' MSA YYZ VOR
Alt Set: INCHES Trans level: FL 180 Trans alt: 18000' 1. SAFE ALTITUDE WITHIN 100 NM 4900'. 2. Use Toronto/Pearson Intl altimeter setting. 3. Verify runway unobstructed. 4. Due to close proximity to Toronto/Pearson Intl, there may be periods when ATC will be unable to approve use of the instrument approach procedure. 5. Pilot controlled lighting 123.3.					



Lighting - Refer to Airport Chart	<b>3200'</b>	YYZ <b>112.15</b>	<b>FRALY</b>
MAP at PEVGU		<b>R-310</b>	

CIRCLE-TO-LAND	
Max Kts	MDA(H)
A 90	<b>1440'</b> (505') -1½
B 120	
C	NA
D	

CHANGES: RUBTU DME deleted, procedure title.